



Every Letter is a Jewel

SUPPLY LIST

PLEASE NOTE: If you've taken some of my classes in the past—specifically my Resist or Funky Letters classes—then you will have most of these supplies.

(U.S. and Canadian residents: [John Neal Bookseller](#) has most of these supplies.)

WRITING TOOLS

- Any kind of pointed nib and a straight holder
- 1 fine point black marker like Pigma Micron in Size 01 or a Sharpie
- Pencil
- A small-tipped embossing tool—or you can use the tip of a paint brush or penholder
- White gel pen (your favorite brand—could also have some colors if you prefer)
- White paint pen (Uni Posca is my favorite) in an extra fine, fine, or bullet tip

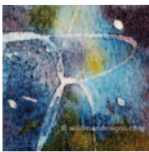


Figure 1

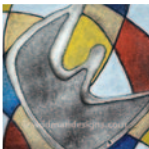


Figure 2



Figure 3

RESIST WRITING OPTIONS (You may choose one or both)

NOTE: The acrylic gesso option will give you the ability to write with both the Finesline and larger-tipped applicators. If you choose the gesso option, there is no need to buy the Golden High-Flow. Both the acrylic gesso and acrylic paint remain on the paper.

- **Finesline Applicator** (preferred size: 20 gauge/.5mm — blue tip)
If you want to try some very delicate writing (see Figure 1), you will want to use the Finesline Applicator filled with either the acrylic gesso mixture OR the Golden High-Flow Acrylic.
- **1 inexpensive applicator bottle with a pointed tip and cap** (can only be filled with acrylic gesso mixture)
If you'd like to try some heavier writing (see Figure 2)—something that gives about 1/8" or larger of a line—then you'll want to buy the applicator bottle.
- Small bottle of Liquitex liquid acrylic gesso and a small bottle of Liquitex acrylic matte or gloss medium
- 1 small bottle (30 ml/1 oz.) of White Golden High-Flow Acrylic

Masking fluid is another type of resist that you remove from the paper once it's dry. (See Figure 3.)

- Masking Fluid (Pebeo is a good brand) either in an applicator or for use with your pointed nib
Applicator examples: [Molotow Masking Pen](#), [Finesline Masquepen](#)

INKS AND PAINTS

- Small bottle each of black sumi and walnut ink, plus cups for ink
- Small bottle of distilled water (to dilute sumi if necessary)
- Jar of Dr. Martin's or Winsor & Newton Bleedproof White or small tube of white gouache and cup to mix
- 2-3 tubes or bottles of your favorite watercolors
- 2-3 tubes of gouache
- One inexpensive flat (1/8") watercolor brush (Simply Simmons is a good brand)
- One inexpensive pointed watercolor brush
- 6-well paint palette
- Metallic gold watercolor (e.g., Schmincke Horadam Gold, Daniel Smith Iridescent Gold, Finetec metallics, etc.)
- Metallic Schmincke Dry Gouache Sec or Pearl Ex Powdered Pigments (to sprinkle into wet media)

(continued on page 2)

workshops with



Contact Information

219.616.0135
julie@wildmandesigns.com
wildmandesigns.com
fb: WildmanDesigns
i: juliewildmandesigns

PAPER

- 10-15 sheets of practice paper with some tooth, preferably 11" x 17" or 12" x 18"
[Pacon Sulphite drawing paper \(medium weight 60lb.\)](#) is good because it has a bit of texture.
Available on Blick or Amazon. However, it only comes in 300 or 500 sheets. You don't need that much for this class, so a drawing pad is another option. Strathmore Drawing 400 series is nice practice paper and takes ink well.
- 2 sheets of 22" x 30" Arches Text Wove OR if you can't get this, any hot press watercolor paper is fine.
You can try cold press, too.
- 1 sheet of 22" x 30" Arches Black Cover OR Artagain Black OR Rives BFK Black. Whatever black paper you choose has to hold up to gouache. You don't want to use something too thin, like Canson Mi-Tientes, because it will buckle when you apply watercolor.

OTHER SUPPLIES

- A few of your favorite colored pencils or pastel pencils
- A few sheets of tracing paper
- White rubber eraser or kneaded eraser
- A black eraser is nice if you have it, but there is no need to purchase one if you don't
- Roll of 1" drafting tape or masking tape
- Ruler
- Water containers
- Roll of paper towels